

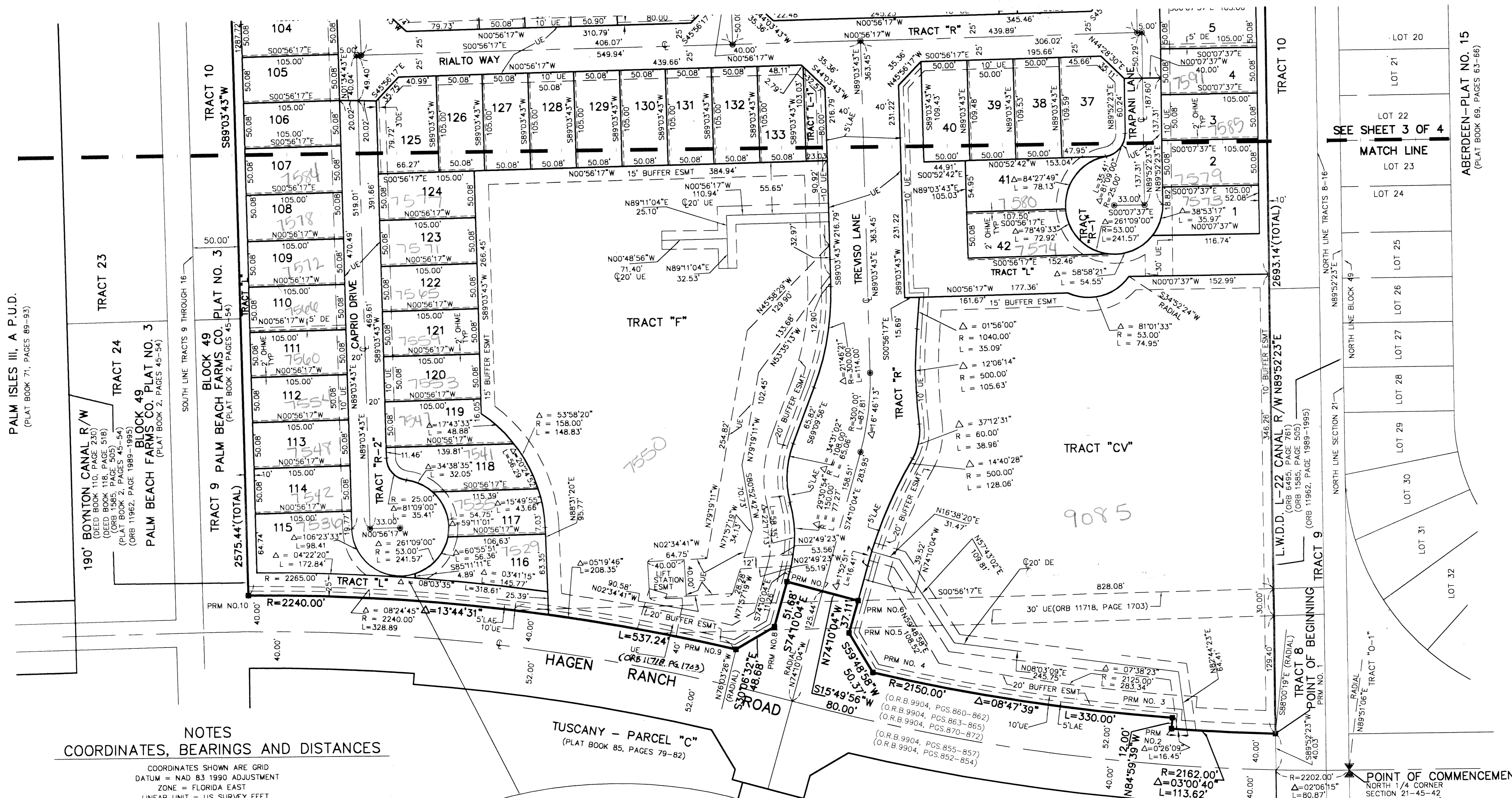
TUSCANY - PARCEL A/B

A PLANNED UNIT DEVELOPMENT BEING A PART CIBA GEIGY PUD
 BEING A REPLAT OF PORTIONS OF TRACTS 8 THROUGH 16 AND A PORTION OF THAT CERTAIN 30 FOOT ROAD
 RIGHT OF WAY LYING BETWEEN TRACTS 8 AND 9, BLOCK 49, PALM BEACH FARMS CO. PLAT NO. 3, SECTIONS 20 AND 21, TOWNSHIP 45 SOUTH, RANGE 42 EAST, ACCORDING TO THE PLAT
 THEREOF AS RECORDED IN PLAT BOOK 2, PAGES 45 THROUGH 54, OF THE PUBLIC RECORDS
 OF PALM BEACH COUNTY, FLORIDA

STATE OF FLORIDA
 COUNTY OF PALM BEACH
 THIS PLAT WAS FILED FOR
 RECORD AT _____ M.
 THIS _____ DAY OF _____
 A.D. 2000 AND DULY RECORDED
 IN PLAT BOOK _____ ON
 PAGES _____ AND _____
 DOROTHY H. WILKEN
 CLERK CIRCUIT COURT

BY: _____
 DEPUTY CLERK

SHEET 4 OF 4

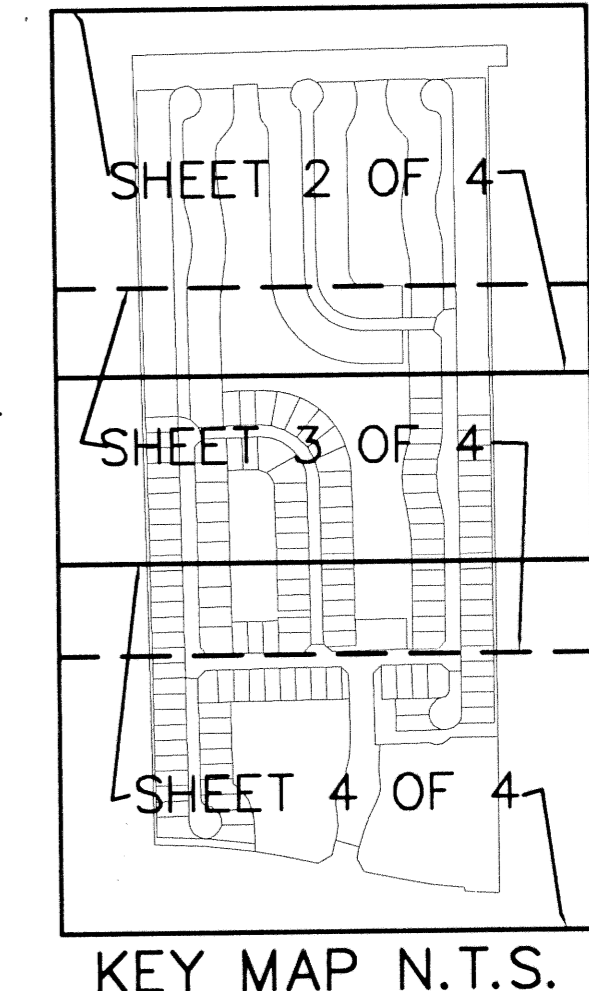
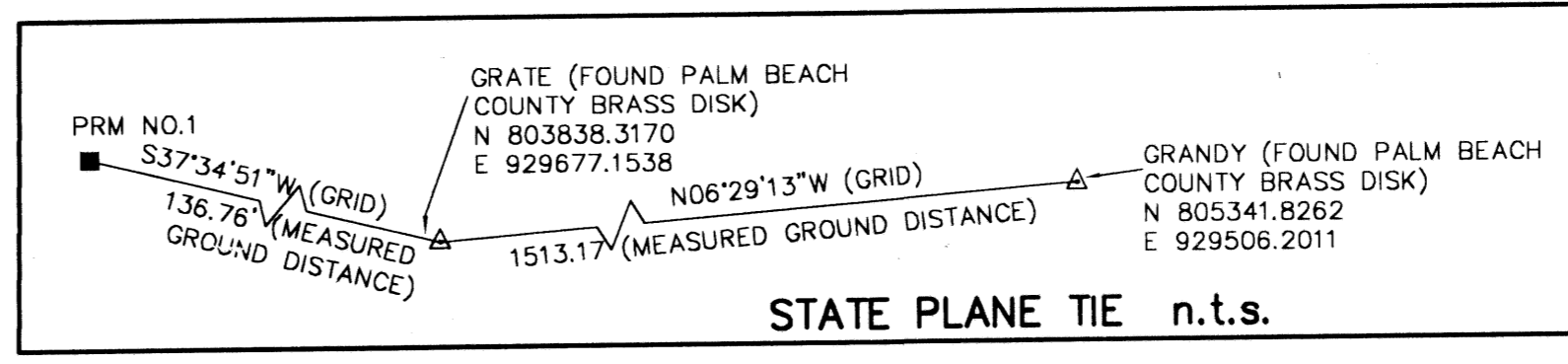
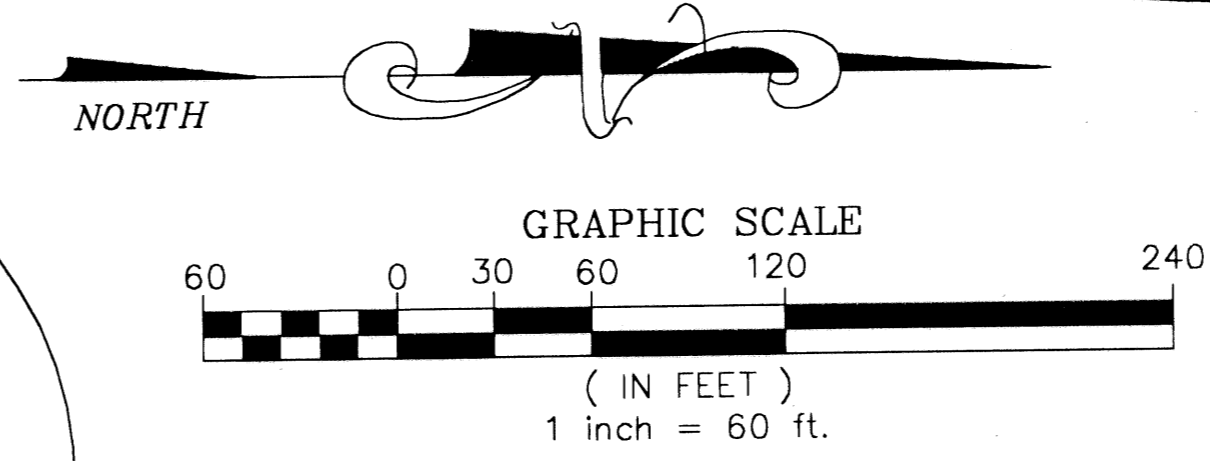
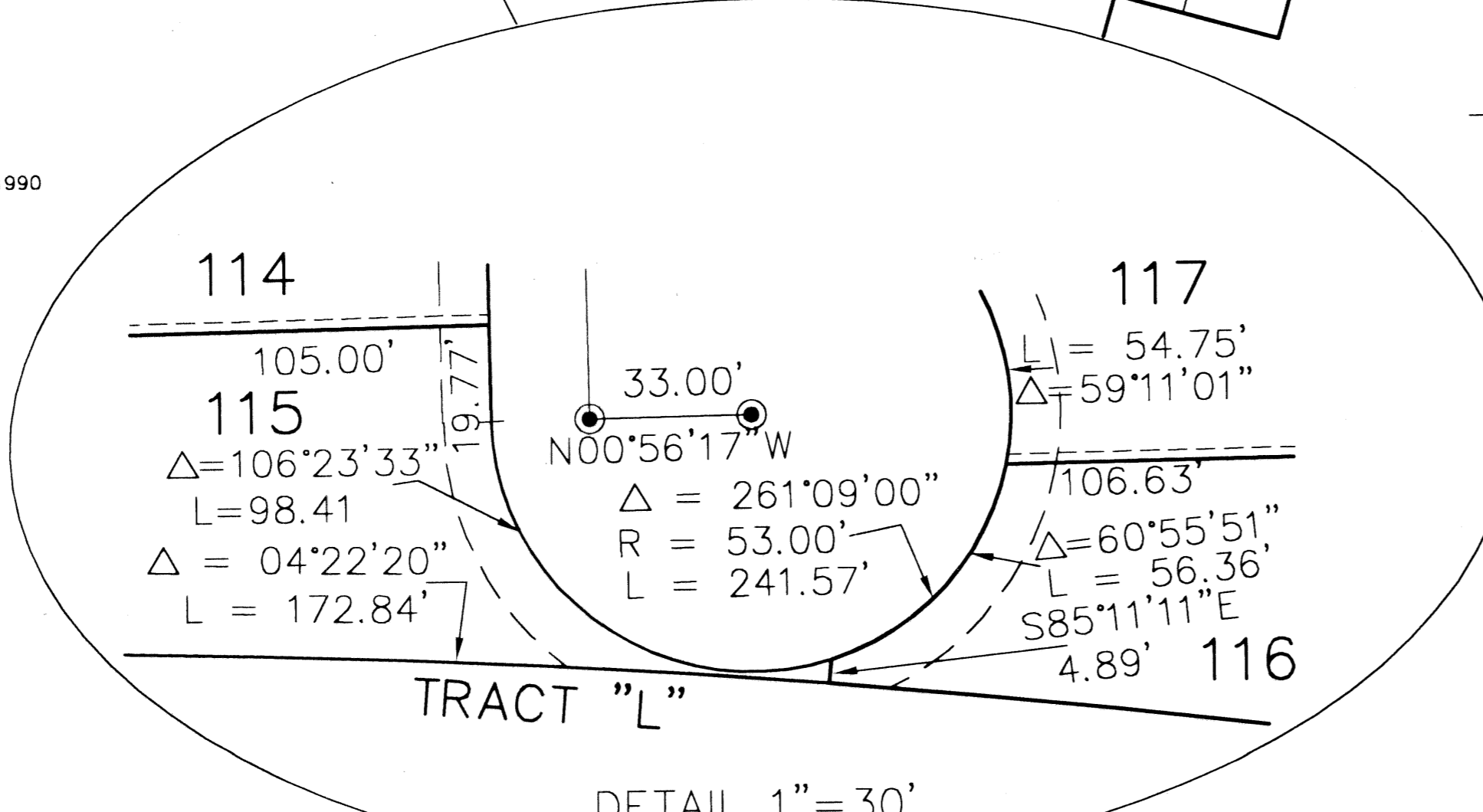


NOTES COORDINATES, BEARINGS AND DISTANCES

COORDINATES SHOWN ARE GRID
 DATUM = NAD 83 1990 ADJUSTMENT
 ZONE = FLORIDA EAST
 LINEAR UNIT = US SURVEY FEET
 COORDINATE SYSTEM 1983 STATE PLANE
 TRANSVERSE MERCATOR PROJECTION
 ALL DISTANCES ARE GROUND
 SCALE FACTOR = 1.000287
 GROUND DISTANCE X SCALE FACTOR = GRID DISTANCE
 BEARINGS AS SHOWN HEREON ARE GRID DATUM, NAD 83 1990
 ADJUSTMENT, FLORIDA EAST ZONE.

COORDINATE TABLE

PRM NO.	NORTHING	EASTING
1	803729.94	929593.75
2	803616.50	929586.81
3	803617.54	929574.86
4	803292.29	929520.99
5	803266.97	929477.45
6	803277.09	929441.75
7	803200.13	929419.92
8	803186.03	929469.64
9	803143.91	929494.06
10	802612.02	929428.08
11	802590.94	928140.49
14	803775.83	928900.55
15	803723.97	928900.55
16	803726.96	928247.15
12	802569.85	92852.91
13	803784.73	928833.01



SUBDIVISION Tuscany - Parcel A/B
 BOOK 81 PAGE 148
 PLANNED UNIT DEVELOPMENT
 QUAD # 80
 TAZ 949.4.1030
 PUD NAME CIBA GEIGY-PUD